

Kies uw selector:

[Wandselector](#)
[Plafond- en vloerselektor](#)

## Plafond- en vloerselektor (112)

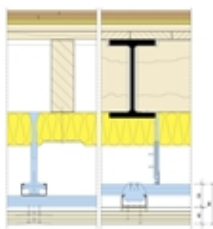
20 producten per pagina ▼

Sorteren op ▼


 Pagina 1 van 6 [1](#) [2](#) [3](#) [4](#) [5](#) [Volgende >](#)
*Liever persoonlijk advies?*

Bel 0347 - 32 51 65

### Gyproc FireBloc plafond i.c.m. Gyproc Acoustic R vloer



min	dB	dB	mm
120	52	56	475

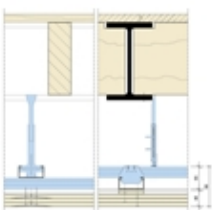
Systeemcode : PD 95 GR P/55.S.3.A + E30 MF  
 Bestaande constructie : Houten vloer en staalconstructie  
 Beplating : 3x Glasroc F 10 mm  
 Draagsysteem : PlaGyp-D systeem

Plaatdragend h.o.h. 500 mm  
 Primair h.o.h. 900 mm  
 Afhangers h.o.h. 750 mm

Minerale wol : Isover glaswol 80 mm  
 Estrichvloer : Rigidur E30 MF

[Meer informatie >](#)

### Gyproc FireBloc plafond



min	dB	dB	mm
120	42	68	348

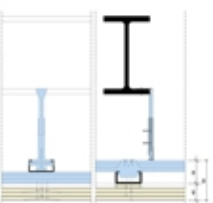
Systeemcode : PD 95 GR P/55.S.3  
 Bestaande constructie : Houten vloer en staalconstructie  
 Beplating : 3x Glasroc F 10 mm  
 Draagsysteem : PlaGyp-D systeem

Plaatdragend h.o.h. 500 mm  
 Primair h.o.h. 900 mm  
 Afhangers h.o.h. 750 mm

Minerale wol : -

[Meer informatie >](#)

### Gyproc FireBloc plafond



min	dB	dB	mm
120	-	-	98

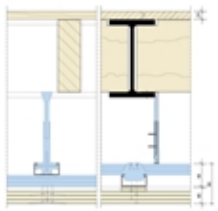
Systeemcode : PD 98 GR P/55.4  
 Bestaande constructie : Stalen liggers  
 Beplating : 3x Glasroc F 10 mm + 1x Glasroc F 12,5 mm





Draagsysteem : PlaGyp-D systeem  
 Plaatdragend h.o.h. 500 mm  
 Primair h.o.h. 650 mm  
 Afhangers h.o.h. 650 mm

Minerale wol : -

[Meer informatie >](#)

### Gyproc FireBloc plafond



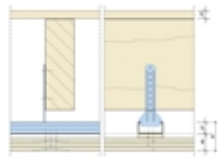
 min	 dB	 dB	 mm
120	-	-	348





Systeemcode : PD 95 GR P/55.S.3  
Bestaande constructie : Houten vloer en staalconstructie  
Beplating : 3x Glasroc F 10 mm  
Draagsysteem : PlaGyp-D systeem  
Plaatdragend h.o.h. 500 mm  
Primair h.o.h. 900 mm  
Afhangers h.o.h. 750 mm

Minerale wol : -

[Meer informatie >](#)

### Gyproc FireBloc plafond



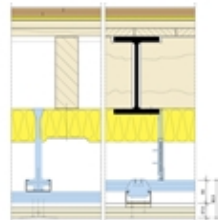
 min	 dB	 dB	 mm
120	-	-	353





Systeemcode : PS 67 GR P/27.S.3  
Bestaande constructie : Houten vloer  
Beplating : 3x Glasroc F 10 mm  
Draagsysteem : PlaGyp-S systeem  
Plaatdragend h.o.h. 500 mm  
Afhangers h.o.h. 550 mm

Minerale wol : -

[Meer informatie >](#)

### Gyproc FireBloc plafond i.c.m. Gyproc Acoustic R vloer



 min	 dB	 dB	 mm
90	52	56	473

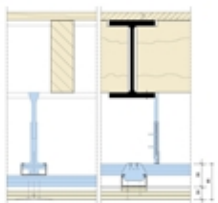
Systeemcode : PD 93 GR P/55.S.2.A + E30 MF  
Bestaande constructie : Houten vloer en staalconstructie  
Beplating : 2x Glasroc F 12,5 mm  
Draagsysteem : PlaGyp-D systeem  
Plaatdragend h.o.h. 500 mm  
Primair h.o.h. 900 mm  
Afhangers h.o.h. 800 mm





Minerale wol : Isover glaswol 80 mm

Estrichvloer : Rigidur E30 MF

[Meer informatie >](#)

### Gyproc FireBloc plafond



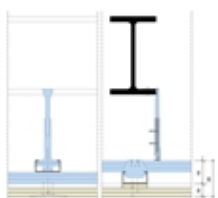
 min	 dB	 dB	 mm
90	42	68	338





Systeemcode : PD 85 GR P/55.S.2  
Bestaande constructie : Houten vloer en staalconstructie  
Beplating : 2x Glasroc F 10 mm  
Draagsysteem : PlaGyp-D systeem  
Plaatdragend h.o.h. 500 mm  
Primair h.o.h. 900 mm  
Afhangers h.o.h. 800 mm

Minerale wol : -

[Meer informatie >](#)

### Gyproc FireBloc plafond



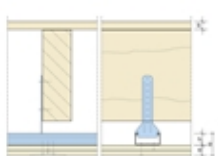
 min	 dB	 dB	 mm
90	-	-	90





Systeemcode : PD 90 GR P/55.3  
Bestaande constructie : Stalen liggers  
Beplating : 2x Glasroc F 12,5 mm + 1x Glasroc F10 mm  
Draagsysteem : PlaGyp-D systeem  
Plaatdragend h.o.h. 500 mm  
Primair h.o.h. 800 mm  
Afhangers h.o.h. 700 mm

Minerale wol : -

[Meer informatie >](#)

### Gyproc FireBloc plafond



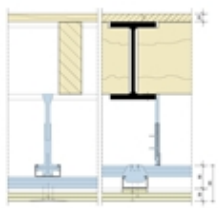
 min	 dB	 dB	 mm
90	-	-	284





Systeemcode : PS 52 GR P/27.2  
Bestaande constructie : Houten vloer  
Beplating : 2x Glasroc F 12,5 mm  
Draagsysteem : PlaGyp-S systeem  
Plaatdragend h.o.h. 600 mm  
Afhangers h.o.h. 1200 mm

Minerale wol : -

[Meer informatie >](#)

### Gyproc FireBloc plafond



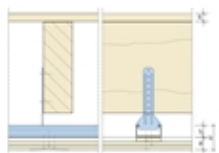
 min	 dB	 dB	 mm
90	-	-	338





Systeemcode : PD 85 GR P/55.S.2  
Bestaande constructie : Houten vloer en staalconstructie  
Beplating : 2x Glasroc F 10 mm  
Draagsysteem : PlaGyp-D systeem  
Plaatdragend h.o.h. 500 mm  
Primair h.o.h. 900 mm  
Afhangers h.o.h. 800 mm

Minerale wol : -

[Meer informatie >](#)

### Gyproc FireBloc plafond



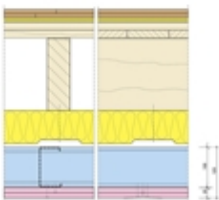
 min	 dB	 dB	 mm
90	-	-	343





Systeemcode : PS 57 GR P/27.S.2  
Bestaande constructie : Houten vloer  
Beplating : 2x Glasroc F 10 mm  
Draagsysteem : PlaGyp-S systeem  
Plaatdragend h.o.h. 500 mm  
Afhangers h.o.h. 550 mm

Minerale wol : -

[Meer informatie >](#)

### Gyproc Classic RF plafond i.c.m. Gyproc Acoustic R vloer

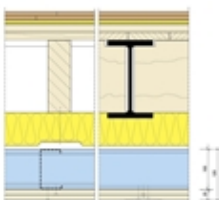






 min	 dB	 dB	 mm
60	54	50	460

Systeemcode : GF 125 RF P/100.2.A + E30 MF  
Bestaande constructie : Houten vloer  
Beplating : 2x Gyproc RF 12,5 mm  
Draagsysteem : GypFrame 100 mm, h.o.h. 400 mm  
Minerale wol : Isover glaswol 80 mm  
Estrichvloer : Rigidur E30 MF

[Meer informatie >](#)

### Gyproc FireBloc plafond i.c.m. Gyproc Acoustic R vloer

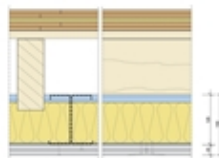






 min	 dB	 dB	 mm
60	54	50	505

Systeemcode : GF 125 GR P/100.2.A + E30 MF  
Bestaande constructie : Houten vloer en staalconstructie  
Beplating : 2x Glasroc F 12,5 mm  
Draagsysteem : GypFrame 100 mm, h.o.h. 400 mm  
Minerale wol : Isover glaswol 80 mm  
Estrichvloer : Rigidur E30 MF

[Meer informatie >](#)

### Gyproc Classic plafond i.c.m. Gyproc Acoustic R vloer

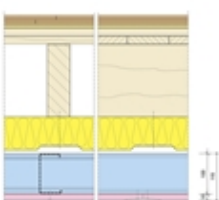






 min	 dB	 dB	 mm
60	53	51	348

Systeemcode : GF 150 P/125.2.A + E20 + E30 MF  
Bestaande constructie : Houten vloer  
Beplating : 2x Gyproc A 12,5 mm  
Draagsysteem : 2x GypFrame 125 mm, h.o.h. 500 mm  
Minerale wol : Steenwol 100 mm, 35 kg/m<sup>3</sup>  
Estrichvloer : Rigidur E20 + E30 MF

[Meer informatie >](#)

### Gyproc Classic RF plafond i.c.m. Gyproc Acoustic R vloer

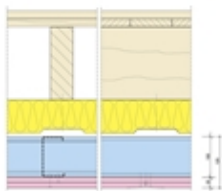






 min	 dB	 dB	 mm
60	53	52	450

Systeemcode : GF 115 RF P/100.1.A + E30 MF  
Bestaande constructie : Houten vloer  
Beplating : 1x Gyproc RF 15 mm  
Draagsysteem : GypFrame 100 mm, h.o.h. 400 mm  
Minerale wol : Isover glaswol 80 mm  
Estrichvloer : Rigidur E30 MF

[Meer informatie >](#)

### Gyproc Classic RF plafond

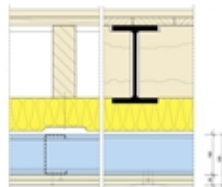






 min	 dB	 dB	 mm
60	53	57	430

Systeemcode : GF 125 RF P/100.2.A  
Bestaande constructie : Houten vloer  
Beplating : 2x Gyproc RF 12,5 mm  
Draagsysteem : GypFrame 100 mm, h.o.h. 400 mm  
Minerale wol : Isover glaswol 80 mm

[Meer informatie >](#)

### Gyproc FireBloc plafond

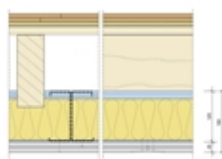






 min	 dB	 dB	 mm
60	53	57	475

Systeemcode : GF 125 GR P/100.2.A  
Bestaande constructie : Houten vloer en staalconstructie  
Beplating : 2x Glasroc F 12,5 mm  
Draagsysteem : GypFrame 100 mm, h.o.h. 400 mm  
Minerale wol : Isover glaswol 80 mm

[Meer informatie >](#)

### Gyproc Classic plafond i.c.m. Gyproc Acoustic R vloer

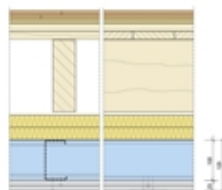






 min	 dB	 dB	 mm
60	52	54	328

Systeemcode : GF 150 P/125.2.A + E30 MF  
Bestaande constructie : Houten vloer  
Beplating : 2x Gyproc A 12,5 mm  
Draagsysteem : 2x GypFrame 125 mm, h.o.h. 500 mm  
Minerale wol : Steenwol 100 mm, 35 kg/m<sup>3</sup>  
Estrichvloer : Rigidur E30 MF

[Meer informatie >](#)

### Gyproc Classic plafond i.c.m. Gyproc Acoustic R vloer

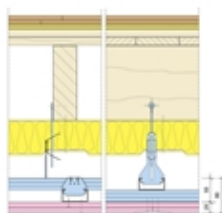






 min	 dB	 dB	 mm
60	52	54	440

Systeemcode : GF 125 P/100.2.AA + E30 MF  
Bestaande constructie : Houten vloer  
Beplating : 2x Gyproc A 12,5 mm  
Draagsysteem : GypFrame 100 mm, h.o.h. 400 mm  
Minerale wol : 2x Steenwol 30 mm (45 kg/m<sup>3</sup>)  
Estrichvloer : Rigidur E30 MF

[Meer informatie >](#)

### Gyproc Classic RF plafond i.c.m. Gyproc Acoustic R vloer



 min	 dB	 dB	 mm
60	52	56	411

Systeemcode : PD 80 RF P/55.2.A + E30 MF  
Bestaande constructie : Houten vloer  
Beplating : 2x Gyproc RF 12,5 mm  
Draagsysteem : PlaGyp-D systeem  
Plaatdragend h.o.h. 400 mm  
Primair h.o.h. 1080 mm  
Afhangers h.o.h. 750 mm  
Minerale wol : Isover glaswol 80 mm  
Estrichvloer : Rigidur E30 MF

[Meer informatie >](#)

20 producten per pagina ▼

Sorteren op ▼

Pagina 1 van 6 **1** 2 3 4 5 [Volgende >](#)

Contact gegevens  
Saint-Gobain Gyproc

Stuartweg 1B  
4131 NH Vianen

T: 0347-325100  
F: 0347-325125

W : [www.Gyproc.nl](http://www.Gyproc.nl)  
E : [info@gyproc.nl](mailto:info@gyproc.nl)